



Jordan fishwick

14 Springfield Drive, SK9 6EN
Guide Price £425,000

Springfield Drive Wilmslow SK9 6EN

Guide Price £425,000



*****NO CHAIN***** This well proportioned **FOUR BEDROOM** semi detached home is situated within a **SOUTH WILMSLOW** location and is within convenient reach of open countryside and popular schools. Internally the accommodation comprises in brief: Entrance hallway, downstairs wc, open plan living/dining room and fitted kitchen. The first floor comprises: three double bedrooms, a further good sized bedroom and a modern family bathroom suite. To the front there is a driveway providing off road parking and leading to the single garage. To the rear there is an enclosed, well manicured garden which is mainly laid to lawn. Internal viewings are highly recommended.



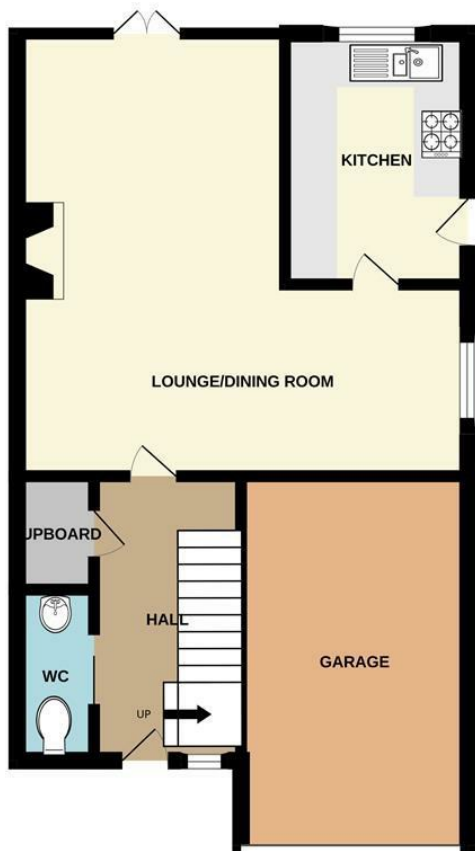
- South Wilmslow Location
- Close Proximity To Open Countryside
- 4 Bedrooms
- Garage
- Private Rear Garden
- Off Road Parking
- No Chain



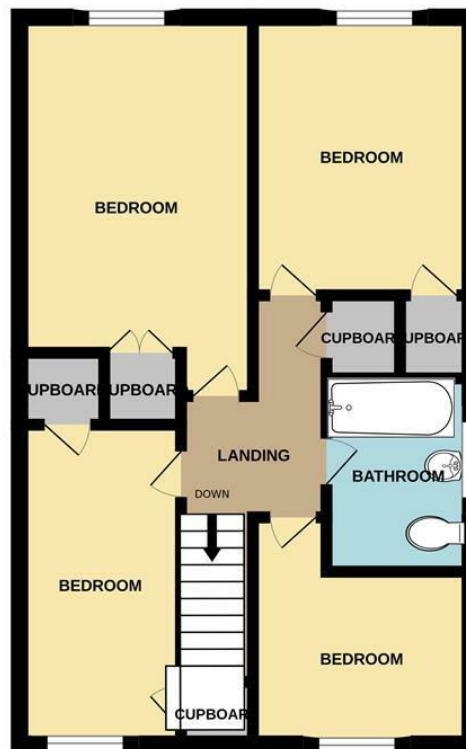
Energy Efficiency Rating		
	Current	Potential
Very energy efficient - lower running costs		
(92 plus) A		
(81-91) B		
(69-80) C		
(55-68) D		
(39-54) E		
(21-38) F		
(1-20) G		
Not energy efficient - higher running costs		
England & Wales	EU Directive 2002/91/EC 	



GROUND FLOOR



1ST FLOOR



Measurements are approximate. Not to scale. Illustrative purposes only
Made with Metropix ©2025



These particulars are believed to be accurate but they are not guaranteed and do not form a contract. Neither Jordan Fishwick nor the vendor or lessor accept any responsibility in respect of these particulars, which are not intended to be statements or representations of fact and any intending purchaser or lessee must satisfy himself by inspection or otherwise as to the correctness of each of the statements contained in these particulars. Any floorplans on this brochure are for illustrative purposes only and are not necessarily to scale.

Offices at: Chorlton, Didsbury, Disley, Hale, Glossop, Macclesfield, Manchester Deansgate, Manchester Whitworth Street, New Mills, Sale, Wilmslow and Withington

36-38 Alderley Road, Wilmslow SK91JX
01625 532000

wilmslow@jordanfishwick.co.uk
www.jordanfishwick.co.uk